



**SRI RAMACHANDRA
INSTITUTE OF HIGHER EDUCATION AND RESEARCH
(Deemed to be University)**

ACADEMIC YEAR 2023-2024 (Jul-23 to Dec-23)

UG/PG PARA MEDICAL PROGRAMMES

UG - (B.Sc. (Hons.) Radiotherapy Technology, B.Sc. (Hons.) Sports & Exercise Sciences, Bachelor in Audiology and Speech-Language Pathology, B.Sc. (Hons.) Environmental Health Sciences, B.Sc. Clinical Research, B.B.A. (Hospital & Health Systems Management), B.Sc. Public Health. B.Sc. Nursing (Basic), B.Sc. Nursing (Post Basic), B. Pharmacy, B. Optometry, B.Sc. (Hons.) Biomedical Sciences, B.Sc. (Clinical Nutrition), B.Sc. (Hons.) Respiratory Technology, B.Sc. (Hons.) Medical Microbiology and Applied Molecular Biology, B.Sc. Applied Psychology, B.Sc. (Hons.) Cardiac Technology, B.Sc. (Hons) Renal and Diaysis Technology, B.Sc. Medical Laboratory Technology B.Sc. Radiology and Imaging Science Technology, Bachelor of Physiotherapy (BPT), B.Sc. Trauma Care Management, B.Sc. (Hons.) Allied Health Sciences, B.Com. Degree Program, B.Com. (Hons.) Degree Program

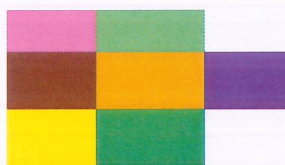
PG : M.P.H. Occupational & Environmental Health, M.Sc. Audiology, M.Sc. Mind-Body Medicine & Lifestyle Sciences, M.Sc. Medical Bioinformatics, M.Sc. Medical Imaging Technology, M.Sc. Applied Child Development, M.P.T. Orthopaedics & Traumatology, M.P.T. Neuro Sciences, M.Sc. Human Genetics, M.Sc. Counselling Psychology Degree Program, M.Sc. Forensic Science, M.P.T. Cardio Pulmonary Sciences, M.P.T. Women's Health, M.Sc. Speech-Language Pathology, M.Sc. Clinical Research, M.Sc. Critical Care Technology Degree Program, M.Sc. Stem Cell and Regenerative Biology, M.Sc. Sports and Exercise Psychology, M.Sc. Neuroscience, M.Sc. Urology Technology, M. Optometry, M.Sc. Medical Psychology, M.Sc. Biotechnology, M.Sc. Clinical Psychology, M.Sc. Clinical Immunology, M.Sc. Medical Laboratory Technology, M.B.A. Hospital & Health Systems Management, M.Sc. Clinical Nutrition, M.Sc. Perfusion Technology, M.Sc. Respiratory Therapy, M.Sc. Biomedical Sciences, M.Sc. Renal Sciences & Dialysis Technology, Master of Sports Physiotherapy, M. Pharm. Pharmacy Practice, M. Pharm. Pharmaceutics, M. Pharm. Pharmaceutical Quality Assurance, M. Pharm. Pharmacognosy, M. Pharm. Pharmacology, M. Pharm. Pharmaceutical Analysis, M. Pharm. Regulatory Affairs, M.Sc. Trauma Care Management, M.Sc. Medical Radiology & Imaging Technology (5 years integrated)

MONTH	SUN	MON	TUE	WED	THU	FRI	SAT	No. of working days (*Comments)
Jul-23							1	1
	2	3	4	5	6	7	8	5
	9	10	11	12	13	14	15	UG-Odd Sem Start
	16	17	18	19	20	21	22	5
	23	24	25	26	27	28	29	5
	30	31						1
Aug-23			1	2	3	4	5	5
	6	7	8	9	10	11	12	5
	13	14	15	16	17	18	19	5
	20	21	22	23	24	25	26	5
	27	28	29	30	31			4
Sep-23						1	2	2
	3	4	5	6	7	8	9	5
	10	11	12	13	14	15	16	PG - Even sem start
	17	18	19*	20	21	22	23	*Founders Day
	24	25	26	27	28	29	30	5
Oct-23	1	2	3	4	5	6	7	* Culturalurs
	8	9	10	11	12	13	14	5
	15	16	17	18	19	20	21	6
	22	23	24	25	26	27	28	3
	29	30	31					2
Nov-23				1	2	3	4	4
	5	6	7	8	9	10	11	5
	12	13	14	15	16	17	18	6
	19	20	21	22	23	24	25	5
	26	27	28	29	30			4
Dec-23						1	2	
	3	4	5	6	7	8	9	UG-odd Sem End
	10	11	12	13	14	15	16	UG- Odd Sem Exam Stat UG- Odd sem Exam End
	17	18	19	20	21	22	23	UG- Even Sem Start date
	24	25	26	27	28	29	30	University Vacation
	31							University Vacation

Govt. Holiday / II&IV Saturday/Sunday

University Vacation /Culturalurs/Science Week-SRIHER(DU)

UG/PG - Odd/Even Sem Start and End Date / UG/PG -
Odd/Even Exam Start and End Date



PTM will be notified by Dean/Principals of each Faculty in October and March
CIA and other Program activities will be available in DIGICAMPUS for each program individually. Students are advised to access the complete Calender on DIGICAMPUS.

*

*



**SRI RAMACHANDRA
INSTITUTE OF HIGHER EDUCATION AND RESEARCH
(Deemed to be University)**

ACADEMIC YEAR 2023-2024(Jan-24-Jul-24)

UG/PG PARA MEDICAL PROGRAMMES

UG - (B.Sc. (Hons.) Radiotherapy Technology, B.Sc. (Hons.) Sports & Exercise Sciences, Bachelor in Audiology and Speech-Language Pathology, B.Sc. (Hons.) Environmental Health Sciences, B.Sc. Clinical Research, B.B.A. (Hospital & Health Systems Management), B.Sc. Public Health. B.Sc. Nursing (Basic), B.Sc. Nursing (Post Basic), B. Pharmacy, B. Optometry, B.Sc. (Hons.) Biomedical Sciences, B.Sc. (Clinical Nutrition), B.Sc. (Hons.) Respiratory Technology, B.Sc. (Hons.) Medical Microbiology and Applied Molecular Biology, B.Sc. Applied Psychology, B.Sc. (Hons.) Cardiac Technology, B.Sc. (Hons) Renal and Diaysis Technology, B.Sc. Medical Laboratory Technology B.Sc. Radiology and Imaging Science Technology, Bachelor of Physiotherapy (BPT), B.Sc. Trauma Care Management, B.Sc. (Hons.) Allied Health Sciences, B.Com. Degree Program, B.Com. (Hons.) Degree Program

PG : M.P.H. Occupational & Environmental Health, M.Sc. Audiology, M.Sc. Mind-Body Medicine & Lifestyle Sciences, M.Sc. Medical Bioinformatics, M.Sc. Medical Imaging Technology, M.Sc. Applied Child Development, M.P.T. Orthopaedics & Traumatology, M.P.T. Neuro Sciences, M.Sc. Human Genetics, M.Sc. Counselling Psychology Degree Program, M.Sc. Forensic Science, M.P.T. Cardio Pulmonary Sciences, M.P.T. Women's Health, M.Sc. Speech-Language Pathology, M.Sc. Clinical Research, M.Sc. Critical Care Technology Degree Program, M.Sc. Stem Cell and Regenerative Biology, M.Sc. Sports and Exercise Psychology, M.Sc. Neuroscience, M.Sc. Urology Technology, M. Optometry, M.Sc. Medical Psychology, M.Sc. Biotechnology, M.Sc. Clinical Psychology, M.Sc. Clinical Immunology, M.Sc. Medical Laboratory Technology, M.B.A. Hospital & Health Systems Management, M.Sc. Clinical Nutrition, M.Sc. Perfusion Technology, M.Sc. Respiratory Therapy, M.Sc. Biomedical Sciences, M.Sc. Renal Sciences & Dialysis Technology, Master of Sports Physiotherapy, M. Pharm. Pharmacy Practice, M. Pharm. Pharmaceutics, M. Pharm. Pharmaceutical Quality Assurance, M. Pharm. Pharmacognosy, M. Pharm. Pharmacology, M. Pharm. Pharmaceutical Analysis, M. Pharm. Regulatory Affairs, M.Sc. Trauma Care Management, M.Sc. Medical Radiology & Imaging Technology (5 years integrated)

MONTH	SUN	MON	TUE	WED	THU	FRI	SAT	No. of working days
Jan-24		1	2	3	4	5	6	4
	7	8	9	10	11	12	13	5
	14	15	16	17	18	19	20	3
	21	22	23	24	25	26	27	3
	28	29	30	31				PG-Odd Sem end Date
Feb-24					1	2	3	3
	4	5	6	7	8	9	10	PG ODD Sem exam start
	11	12	13	14	15	16	17	6
	18	19	20	21	22	23	24	PG odd sem Exam end date
	25	26	27	28	29			Science Week
Mar-24						1	2	2
	3	4	5	6	7	8	9	5
	10	11	12	13	14	15	16	6
	17	18	19	20	21	22	23	5
	24	25	26	27	28	29	30	5
	31							1
Apr-24		1	2	3	4	5	6	6
	7	8	9	10	11	12	13	3
	14	15	16	17	18	19	20	UG-Even Sem end
	21	22	23	24	25	26	27	Ug even sem exam start
	28	29	30					2
May-24				1	2	3	4	UG- Even sem exam end
	5	6	7	8	9	10	11	
	12	13	14	15	16	17	18	University Vacation
	19	20	21	22	23	24	25	University Vacation
	26	27	28	29	30	31		University Vacation
Jun-24							1	1
	2	3	4	5	6	7	8	5
	9	10	11	12	13	14	15	6
	16	17	18	19	20	21	22	4
	23	24	25	26	27	28	29	5
	30							0

Govt. Holiday / II&IV Saturday/Sunday

University Vacation /Culturals/Science Week-SRIHER(DU)

UG/PG - Odd/Even Sem Start and End Date / UG/PG -
Odd/Even Exam Start and End Date



PTM will be notified by Dean/Principals of each Faculty in October and March

*

CIA and other Program activities will be available in DIGICAMPUS for each program individually. Students are advised to access the complete Calender on DIGICAMPUS.

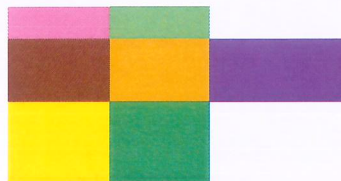
*



**SRI RAMACHANDRA
INSTITUTE OF HIGHER EDUCATION AND RESEARCH
(Deemed to be University)**

ACADEMIC YEAR 2023-2024 - Dental (Aug-23 to Dec-23)								
MONTH	SUN	MON	TUE	WED	THU	FRI	SAT	No. of working days (*Comments)
Aug-23			1	2	3	4	5	5
	6	7	8	9	10	11	12	5
	13	14	15	16	17	18	19	5
	20	21	22	23	24	25	26	5
	27	28	29	30	31			UG Start Date
Sep-23						1	2	2
	3	4	5	6	7	8	9	PG Start Date
	10	11	12	13	14	15	16	6
	17	18	19*	20	21	22	23	*Founders Day
	24	25	26	27	28	29	30	5
Oct-23	1	2	3	4	5	6	7	* Culturals
	8	9	10	11	12	13	14	5
	15	16	17	18	19	20	21	6
	22	23	24	25	26	27	28	3
	29	30	31					2
Nov-23				1	2	3	4	4
	5	6	7	8	9	10	11	5
	12	13	14	15	16	17	18	6
	19	20	21	22	23	24	25	5
	26	27	28	29	30			4
Dec-23						1	2	2
	3	4	5	6	7	8	9	5
	10	11	12	13	14	15	16	6
	17	18	19	20	21	22	23	5
	24	25	26	27	28	29	30	University Vacation
31							University Vacation	

Govt. Holiday / II&IV Saturday/Sunday
 University Vacation /Culturals/Science Week-
 SRIHER(DU)
 UG/PG - Odd/Even Sem Start and End
 Date / UG/PG - Odd/Even Exam Start
 and End Date



**PTM will be notified by Dean/Principals of each Faculty
in October and March**

*

**CIA and other Program activities will be available in
DIGICAMPUS for each program individually. Students
are advised to access the complete Calender on
DIGICAMPUS.**

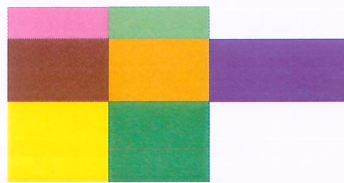
*



**SRI RAMACHANDRA
INSTITUTE OF HIGHER EDUCATION AND RESEARCH
(Deemed to be University)**

ACADEMIC YEAR 2023-2024 - Dental (Jan-24 to Jun-24)								
MONTH	SUN	MON	TUE	WED	THU	FRI	SAT	No. of working days (*Comments)
Jan-24		1	2	3	4	5	6	5
	7	8	9	10	11	12	13	5
	14	15	16	17	18	19	20	3
	21	22	23	24	25	26	27	3
	28	29	30	31				3
Feb-24					1	2	3	3
	4	5	6	7	8	9	10	5
	11	12	13	14	15	16	17	6
	18	19	20	21	22	23	24	5
	25	26	27	28	29			4
Mar-24						1	2	2
	3	4	5	6	7	8	9	5
	10	11	12	13	14	15	16	6
	17	18	19	20	21	22	23	5
	24	25	26	27	28	29	30	5
	31							1
Apr-24		1	2	3	4	5	6	6
	7	8	9	10	11	12	13	3
	14	15	16	17	18	19	20	5
	21	22	23	24	25	26	27	5
	28	29	30					2
May-24				1	2	3	4	3
	5	6	7	8	9	10	11	5
	12	13	14	15	16	17	18	University Vacation
	19	20	21	22	23	24	25	University Vacation
	26	27	28	29	30	31		University Vacation
Jun-24							1	1
	2	3	4	5	6	7	8	5
	9	10	11	12	13	14	15	6
	16	17	18	19	20	21	22	4
	23	24	25	26	27	28	29	5
							30	0

Govt. Holiday / II&IV Saturday/Sunday
 University Vacation /Culturals/Science Week-
 SRIHER(DU)
 UG/PG - Odd/Even Sem Start and End
 Date / UG/PG - Odd/Even Exam Start
 and End Date



PTM will be notified by Dean/Principals of each Faculty in October and March

*

CIA and other Program activities will be available in DIGICAMPUS for each program individually. Students are advised to access the complete Calender on DIGICAMPUS.

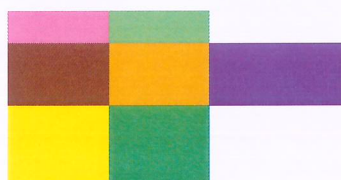
*



**SRI RAMACHANDRA
INSTITUTE OF HIGHER EDUCATION AND RESEARCH
(Deemed to be University)**

ACADEMIC YEAR 2023-2024 - Dental (Jul-24to Dec-24)								
MONTH	SUN	MON	TUE	WED	THU	FRI	SAT	No. of working days (*Comments)
Jul-24		1	2	3	4	5	6	6
	7	8	9	10	11	12	13	5
	14	15	16	17	18	19	20	5
	21	22	23	24	25	26	27	5
	28	29	30	31				UG Class End
Aug-24					1	2	3	UG Exam Start
	4	5	6	7	8	9	10	5
	11	12	13	14	15	16	17	UG Exam End
	18	19	20	21	22	23	24	4
	25	26	27	28	29	30	31	PG Class End
Sep-24	1	2	3	4	5	6	7	PG Exam Start
	8	9	10	11	12	13	14	PG Exam End
	15	16	17	18	19	20	21	5
	22	23	24	25	26	27	28	5
	29	30						1
Oct-24			1	2	3	4	5	* Culturals
	6	7	8	9	10	11	12	4
	13	14	15	16	17	18	19	6
	20	21	22	23	24	25	26	5
	27	28	29	30	31			3
Nov-24						1	2	2
	3	4	5	6	7	8	9	5
	10	11	12	13	14	15	16	6
	17	18	19	20	21	22	23	5
	24	25	26	27	28	29	30	6
Dec-24	1	2	3	4	5	6	7	6
	8	9	10	11	12	13	14	5
	15	16	17	18	19	20	21	6
	22	23	24	25	26	27	28	University Vacation
	29	30	31					University Vacation

Govt. Holiday / II&IV Saturday/Sunday
 University Vacation /Culturals/Science Week-
 SRIHER(DU)
 UG/PG - Odd/Even Sem Start and End
 Date / UG/PG - Odd/Even Exam Start
 and End Date



**PTM will be notified by Dean/Principals of each Faculty
in October and March**

*

**CIA and other Program activities will be available in
DIGICAMPUS for each program individually. Students
are advised to access the complete Calender on
DIGICAMPUS.**

*



**SRI RAMACHANDRA
INSTITUTE OF HIGHER EDUCATION AND RESEARCH
(Deemed to be University)**

ACADEMIC YEAR 2023-2024 - Medical (Aug-23 to Dec-23)								
MONTH	SUN	MON	TUE	WED	THU	FRI	SAT	No. of working days (*Comments)
Aug-23			1	2	3	4	5	5
	6	7	8	9	10	11	12	5
	13	14	15	16	17	18	19	5
	20	21	22	23	24	25	26	5
	27	28	29	30	31			4
Sep-23						1	2	2
	3	4	5	6	7	8	9	PG Class Start
	10	11	12	13	14	15	16	UG Class Start
	17	18	19*	20	21	22	23	*Founders Day
	24	25	26	27	28	29	30	5
Oct-23	1	2	3	4	5	6	7	* Cultural
	8	9	10	11	12	13	14	5
	15	16	17	18	19	20	21	6
	22	23	24	25	26	27	28	3
	29	30	31					2
Nov-23				1	2	3	4	4
	5	6	7	8	9	10	11	5
	12	13	14	15	16	17	18	6
	19	20	21	22	23	24	25	5
	26	27	28	29	30			4
Dec-23						1	2	2
	3	4	5	6	7	8	9	5
	10	11	12	13	14	15	16	6
	17	18	19	20	21	22	23	5
	24	25	26	27	28	29	30	University Vacation
	31							University Vacation

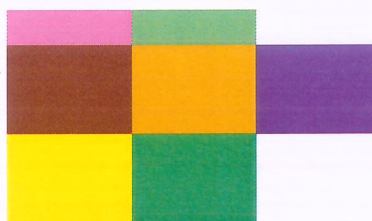
Govt. Holiday / II&IV Saturday/Sunday

University Vacation /Culturals/Science Week-
SRIHER(DU)

UG/PG - Odd/Even Sem Start and

End Date / UG/PG - Odd/Even

Exam Start and End Date



PTM will be notified by Dean/Principals of each Faculty in October and March

*

CIA and other Program activities will be available in DIGICAMPUS for each program individually. Students are advised to access the complete Calender on DIGICAMPUS.

*



**SRI RAMACHANDRA
INSTITUTE OF HIGHER EDUCATION AND RESEARCH
(Deemed to be University)**

ACADEMIC YEAR 2023-2024- Medical (Jan-24 to Jun-24)								
MONTH	SUN	MON	TUE	WED	THU	FRI	SAT	No. of working days (*Comments)
Jan-24		1	2	3	4	5	6	5
	7	8	9	10	11	12	13	5
	14	15	16	17	18	19	20	3
	21	22	23	24	25	26	27	3
	28	29	30	31				3
Feb-24					1	2	3	3
	4	5	6	7	8	9	10	5
	11	12	13	14	15	16	17	6
	18	19	20	21	22	23	24	5
	25	26	27	28	29			4
Mar-24						1	2	2
	3	4	5	6	7	8	9	5
	10	11	12	13	14	15	16	6
	17	18	19	20	21	22	23	5
	24	25	26	27	28	29	30	5
	31							1
Apr-24		1	2	3	4	5	6	6
	7	8	9	10	11	12	13	3
	14	15	16	17	18	19	20	5
	21	22	23	24	25	26	27	5
	28	29	30					2
May-24				1	2	3	4	3
	5	6	7	8	9	10	11	5
	12	13	14	15	16	17	18	University Vacation
	19	20	21	22	23	24	25	University Vacation
	26	27	28	29	30	31		University Vacation
Jun-24							1	1
	2	3	4	5	6	7	8	5
	9	10	11	12	13	14	15	6
	16	17	18	19	20	21	22	4
	23	24	25	26	27	28	29	5
	30							0

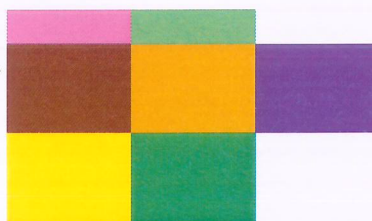
Govt. Holiday / II&IV Saturday/Sunday

University Vacation /Culturals/Science Week-
SRIHER(DU)

UG/PG - Odd/Even Sem Start and

End Date / UG/PG - Odd/Even

Exam Start and End Date



PTM will be notified by Dean/Principals of each Faculty in October and March

*

CIA and other Program activities will be available in DIGICAMPUS for each program individually. Students are advised to access the complete Calender on DIGICAMPUS.

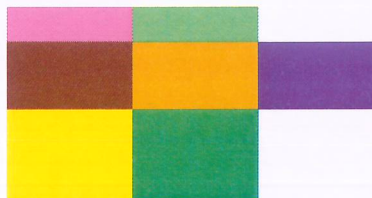
*



**SRI RAMACHANDRA
INSTITUTE OF HIGHER EDUCATION AND RESEARCH
(Deemed to be University)**

ACADEMIC YEAR 2023-2024 - Medical (Jul-24 to Dec-24)								
MONTH	SUN	MON	TUE	WED	THU	FRI	SAT	No. of working days (*Comments)
Jul-24		1	2	3	4	5	6	6
	7	8	9	10	11	12	13	5
	14	15	16	17	18	19	20	5
	21	22	23	24	25	26	27	5
	28	29	30	31				3
Aug-24					1	2	3	3
	4	5	6	7	8	9	10	5
	11	12	13	14	15	16	17	6
	18	19	20	21	22	23	24	4
	25	26	27	28	29	30	31	6
Sep-24	1	2	3	4	5	6	7	PG Class End
	8	9	10	11	12	13	14	5
	15	16	17	18	19	20	21	5
	22	23	24	25	26	27	28	5
	29	30						1
Oct-24			1	2	3	4	5	* Cultural
	6	7	8	9	10	11	12	4
	13	14	15	16	17	18	19	6
	20	21	22	23	24	25	26	5
	27	28	29	30	31			3
Nov-24						1	2	2
	3	4	5	6	7	8	9	5
	10	11	12	13	14	15	16	UG Class End UG Exam Start
	17	18	19	20	21	22	23	5
	24	25	26	27	28	29	30	6
Dec-24	1	2	3	4	5	6	7	UG Exam End
	8	9	10	11	12	13	14	5
	15	16	17	18	19	20	21	6
	22	23	24	25	26	27	28	University Vacation
	29	30	31					University Vacation

Govt. Holiday / II&IV Saturday/Sunday
 University Vacation /Culturals/Science Week-
 SRIHER(DU)
 UG/PG - Odd/Even Sem Start and End Date /
 UG/PG - Odd/Even Exam Start and End Date



PTM will be notified by Dean/Principals of each Faculty in October and March

*

CIA and other Program activities will be available in DIGICAMPUS for each program individually. Students are advised to access the complete Calender on DIGICAMPUS.

*



**SRI RAMACHANDRA
INSTITUTE OF HIGHER EDUCATION AND RESEARCH
(Deemed to be University)**

ACADEMIC YEAR 2023-2024 - SRET-UG (Aug-23 to Dec-23)								
MONTH	SUN	MON	TUE	WED	THU	FRI	SAT	No. of working days (*Comments)
Aug-23			1	2	3	4	5	5
	6	7	8	9	10	11	12	5
	13	14	15	16	17	18	19	5
	20	21	22	23	24	25	26	5
	27	28	29	30	31			4
Sep-23						1	2	2
	3	4	5	6	7	8	9	5
	10	11	12	13	14	15	16	6
	17	18	19*	20	21	22	23	*Founders Day
	24	25	26	27	28	29	30	5
Oct-23	1	2	3	4	5	6	7	* Culturals
	8	9	10	11	12	13	14	5
	15	16	17	18	19	20	21	6
	22	23	24	25	26	27	28	3
	29	30	31					2
Nov-23				1	2	3	4	4
	5	6	7	8	9	10	11	5
	12	13	14	15	16	17	18	6
	19	20	21	22	23	24	25	5
	26	27	28	29	30			4
Dec-23						1	2	2
	3	4	5	6	7	8	9	5
	10	11	12	13	14	15	16	6
	17	18	19	20	21	22	23	5
	24	25	26	27	28	29	30	University Vacation
	31							University Vacation

Govt. Holiday / II&IV Saturday/Sunday
 University Vacation /Culturals/Science Week-
 SRIHER(DU)
 UG - odd/Even Sem Start and End Date / UG
 - odd/Even Exam Start and End Date
 UG - odd/Even Exam Start and End Date /UG
 - Start and End Date

		Term
		Pattern
		Semester
		Pattern

PTM will be notified by Dean/Principals of each Faculty in October and March

*

CIA and other Program activities will be available in DIGICAMPUS for each program individually. Students are advised to access the complete Calender on DIGICAMPUS.

*



**SRI RAMACHANDRA
INSTITUTE OF HIGHER EDUCATION AND RESEARCH
(Deemed to be University)**

ACADEMIC YEAR 2023-2024 - SRET-UG (Jan-24 to Aug-24)								
MONTH	SUN	MON	TUE	WED	THU	FRI	SAT	No. of working days (*Comments)
Jan-24		1	2	3	4	5	6	5
	7	8	9	10	11	12	13	5
	14	15	16	17	18	19	20	3
	21	22	23	24	25	26	27	3
	28	29	30	31				3
Feb-24					1	2	3	3
	4	5	6	7	8	9	10	5
	11	12	13	14	15	16	17	6
	18	19	20	21	22	23	24	5
	25	26	27	28	29			4
Mar-24						1	2	2
	3	4	5	6	7	8	9	5
	10	11	12	13	14	15	16	6
	17	18	19	20	21	22	23	5
	24	25	26	27	28	29	30	5
Apr-24								1
	3	4	5	6	7	8	9	5
	10	11	12	13	14	15	16	6
	17	18	19	20	21	22	23	5
	24	25	26	27	28	29	30	5
May-24		1	2	3	4	5	6	6
	7	8	9	10	11	12	13	3
	14	15	16	17	18	19	20	5
	21	22	23	24	25	26	27	5
	28	29	30					2
Jun-24				1	2	3	4	3
	5	6	7	8	9	10	11	5
	12	13	14	15	16	17	18	University Vacation
	19	20	21	22	23	24	25	University Vacation
	26	27	28	29	30	31		University Vacation
Jul-24							1	1
	2	3	4	5	6	7	8	5
	9	10	11	12	13	14	15	6
	16	17	18	19	20	21	22	4
	23	24	25	26	27	28	29	5
Aug-24								0
		1	2	3	4	5	6	6
	7	8	9	10	11	12	13	5
	14	15	16	17	18	19	20	5
	21	22	23	24	25	26	27	5
Aug-24	28	29	30	31				
					1	2	3	3
	4	5	6	7	8	9	10	5
	11	12	13	14	15	16	17	6
	18	19	20	21	22	23	24	5
	25	26	27	28	29	30	31	6

Govt. Holiday / II&IV Saturday/Sunday
 University Vacation /Culturals/Science Week-
 SRIHER(DU)
 UG - odd/Even Sem Start and End Date / UG -
 odd/Even Exam Start and End Date
 UG - odd/Even Exam Start and End Date UG -
 Start and End Date



PTM will be notified by Dean/Principals of each Faculty in October and March *

CIA and other Program activities will be available in DIGICAMPUS for each program individually. Students are advised to access the complete Calender on DIGICAMPUS. *



**SRI RAMACHANDRA
INSTITUTE OF HIGHER EDUCATION AND RESEARCH
(Deemed to be University)**

ACADEMIC YEAR 2023-2024 - SRET-PG (Aug-23 to Dec-23)								
MONTH	SUN	MON	TUE	WED	THU	FRI	SAT	No. of working days (*Comments)
Aug-23			1	2	3	4	5	5
	6	7	8	9	10	11	12	5
	13	14	15	16	17	18	19	5
	20	21	22	23	24	25	26	5
	27	28	29	30	31			4
Sep-23						1	2	2
	3	4	5	6	7	8	9	5
	10	11	12	13	14	15	16	6
	17	18	19*	20	21	22	23	*Founders Day
	24	25	26	27	28	29	30	5
Oct-23	1	2	3	4	5	6	7	* Culturals
	8	9	10	11	12	13	14	5
	15	16	17	18	19	20	21	6
	22	23	24	25	26	27	28	3
	29	30	31					2
Nov-23				1	2	3	4	4
	5	6	7	8	9	10	11	5
	12	13	14	15	16	17	18	6
	19	20	21	22	23	24	25	5
	26	27	28	29	30			4
Dec-23						1	2	2
	3	4	5	6	7	8	9	5
	10	11	12	13	14	15	16	6
	17	18	19	20	21	22	23	5
	24	25	26	27	28	29	30	University Vacation
	31							University Vacation

Govt. Holiday / II&IV Saturday/Sunday
 University Vacation /Culturals/Science Week-
 SRIHER(DU)
 PG - odd/Even Sem Start and End Date / PG -
 odd/Even Exam Start and End Date



PTM will be notified by Dean/Principals of each Faculty in October and March *

CIA and other Program activities will be available in DIGICAMPUS for each program individually. *

Students are advised to access the complete Calender on DIGICAMPUS.



**SRI RAMACHANDRA
INSTITUTE OF HIGHER EDUCATION AND RESEARCH
(Deemed to be University)**

ACADEMIC YEAR 2023-2024 SRET - PG (Jan-24 to Aug-24)								
MONTH	SUN	MON	TUE	WED	THU	FRI	SAT	No. of working days (*Comments)
Jan-24		1	2	3	4	5	6	5
	7	8	9	10	11	12	13	5
	14	15	16	17	18	19	20	3
	21	22	23	24	25	26	27	3
	28	29	30	31				3
Feb-24					1	2	3	3
	4	5	6	7	8	9	10	5
	11	12	13	14	15	16	17	6
	18	19	20	21	22	23	24	5
	25	26	27	28	29			4
Mar-24						1	2	2
	3	4	5	6	7	8	9	5
	10	11	12	13	14	15	16	6
	17	18	19	20	21	22	23	5
	24	25	26	27	28	29	30	5
	31							1
Apr-24		1	2	3	4	5	6	6
	7	8	9	10	11	12	13	3
	14	15	16	17	18	19	20	5
	21	22	23	24	25	26	27	5
	28	29	30					2
May-24				1	2	3	4	3
	5	6	7	8	9	10	11	5
	12	13	14	15	16	17	18	University Vacation
	19	20	21	22	23	24	25	University Vacation
	26	27	28	29	30	31		University Vacation
Jun-24							1	1
	2	3	4	5	6	7	8	5
	9	10	11	12	13	14	15	6
	16	17	18	19	20	21	22	4
	23	24	25	26	27	28	29	5
30							0	
Jul-24		1	2	3	4	5	6	6
	7	8	9	10	11	12	13	5
	14	15	16	17	18	19	20	5
	21	22	23	24	25	26	27	5
	28	29	30	31				
Aug-24					1	2	3	3
	4	5	6	7	8	9	10	5
	11	12	13	14	15	16	17	6
	18	19	20	21	22	23	24	5
	25	26	27	28	29	30	31	6

Govt. Holiday / II&IV Saturday/Sunday
 University Vacation /Culturals/Science Week-
 SRIHER(DU)
 PG - odd/Even Sem Start and End Date / PG -
 odd/Even Exam Start and End Date



PTM will be notified by Dean/Principals of each Faculty in October and March

*

CIA and other Program activities will be available in DIGICAMPUS for each program individually. Students are advised to access the complete Calender on DIGICAMPUS.

*